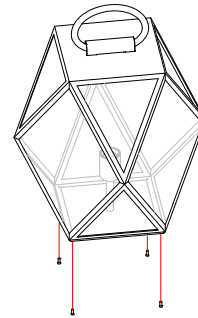


ALL OPERATIONS MUST BE CARRIED OUT BY QUALIFIED PERSON

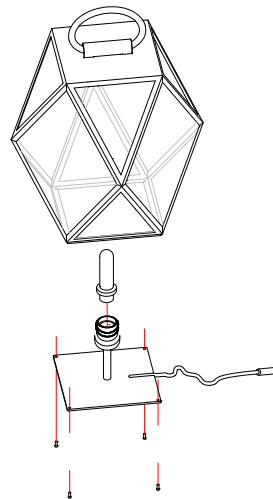
- ① Unscrew the 4 screws under the base.

-----  
Svitare le 4 viti sotto la base.



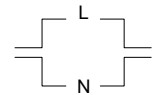
- ② Lift the structure.  
Insert the bulb, mount the structure on the base and secure with the screws

-----  
Sollevare la struttura.  
Inserire la lampadina, montare la struttura alla base assicurandola con le viti.



MORSETTO IP68  
CLAMP IP68

5695/1



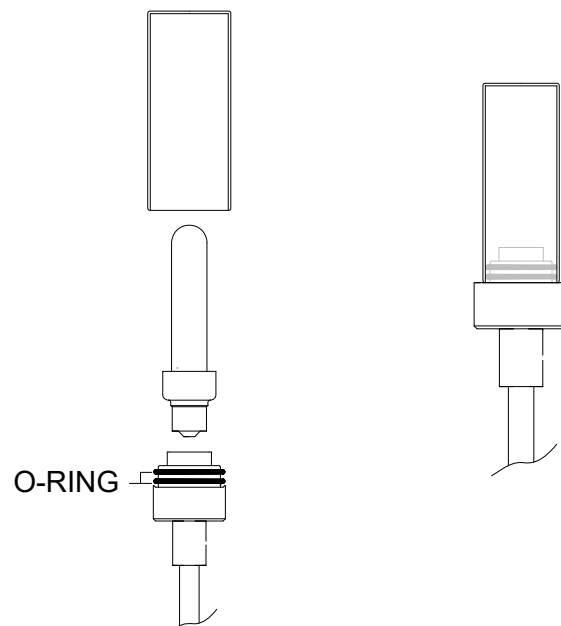
CONNECT THE CLAMP  
TO THE POWER UNIT  
FOLLOWING THE  
ATTACHED INSTRUCTIONS

- ③ During the assembly, or when replacing a bulb verify the presence of the gasket (O-RING) between the ring nut and the glass.

Insert the glass up to the bottom.  
**WARNING!** Thread the glass by applying pressure and not by rotation.  
If the glass or the gasket are damaged, do not connect the power unit and replace them.

-----  
Nel montaggio o nella sostituzione della lampadina verificare sempre la presenza della guarnizione (O-RING) tra ghiera e vetro.

Inserire il vetro infilandolo fino in fondo.  
**ATTENZIONE!** Infilare il vetro applicando una pressione e non ruotandolo.  
Se il vetro o la guarnizione risultassero danneggiati non collegare l'alimentazione e sostituirli.





# M682-B IP68 Waterproof Connector

Connettore impermeabile M682-B IP68



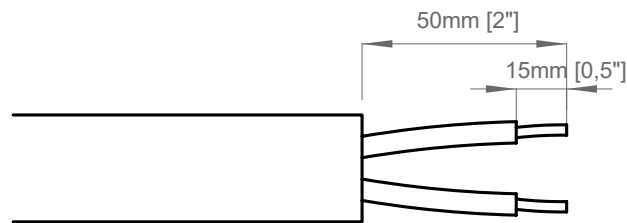
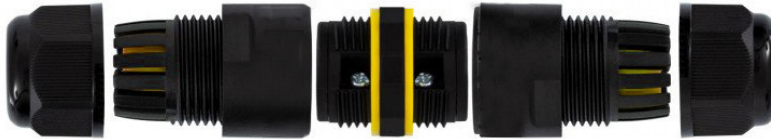
INSTALLING INSTRUCTIONS

Pag. 1/2

DRAWN BY

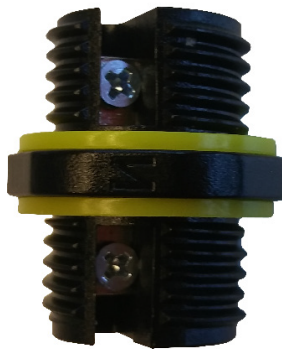
N.O.

ALL OPERATIONS MUST BE CARRIED OUT BY QUALIFIED PERSON



- ① Prepare terminal connector and two wires, wires need split 2" and remove 1/2" of jacket.

Preparare il connettore terminale e i due fili, i fili devono essere scoperti 50mm circa e rimuovere 15mm dal rivestimento dei cavi.



- ② Back out the screws in terminal block a little to ensure following easy connection.

Allentare leggermente le viti nella morsettiera per garantire una facile connessione.

# M682-B IP68 Waterproof Connector

Connettore impermeabile M682-B IP68



INSTALLING INSTRUCTIONS

Pag. 2/2

DRAWN BY

N.O.

ALL OPERATIONS MUST BE CARRIED OUT BY QUALIFIED PERSON



- ③ Plug the wires into the terminal block and screw tighten, please make sure the color of wires matches the picture.

-----  
Inserire i fili nella morsettiera e serrare a fondo, assicurarsi che il colore dei fili sia corrispondente all'immagine.



- ④ Twist and tighten the cable glands.

-----  
Serrare i fermacavi.